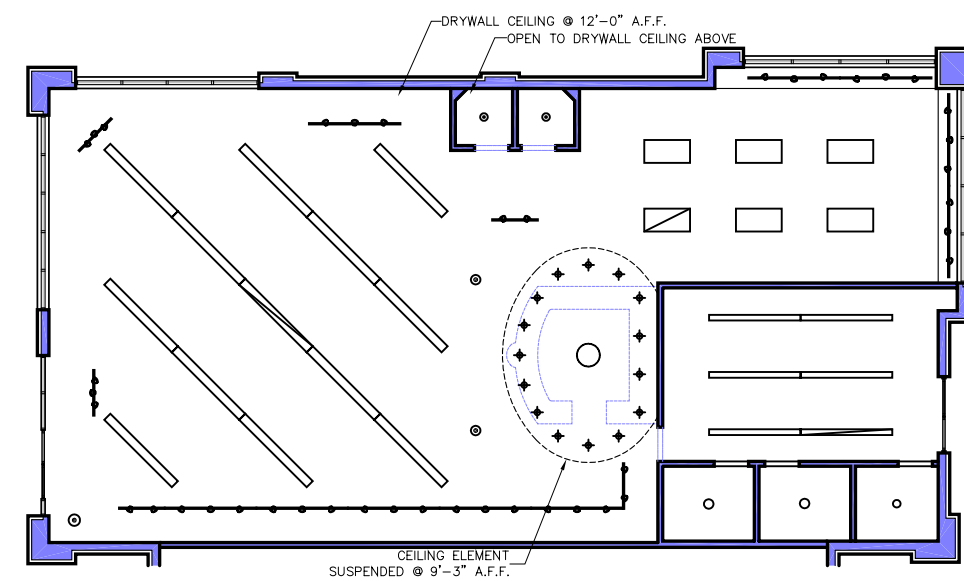
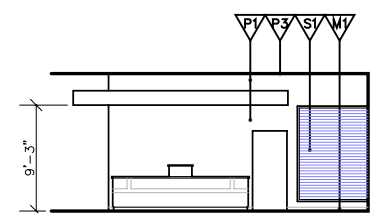
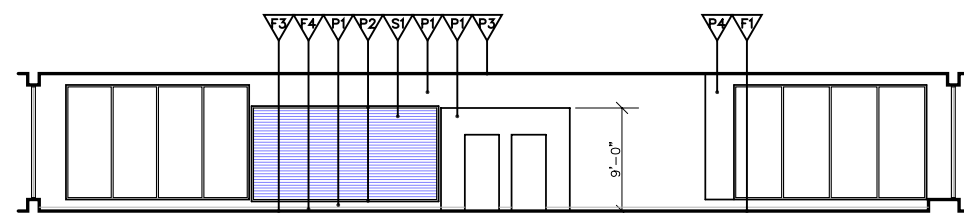
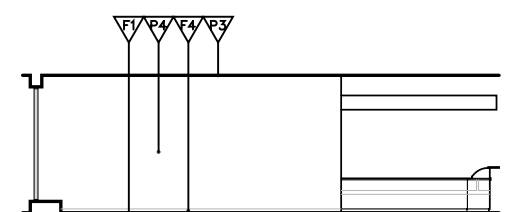
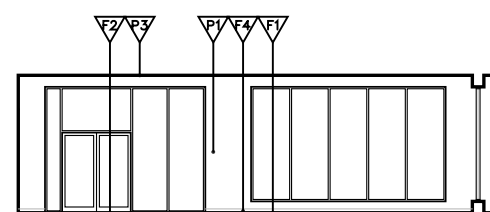
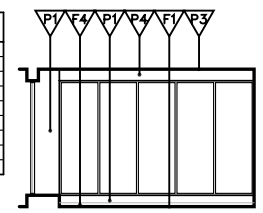
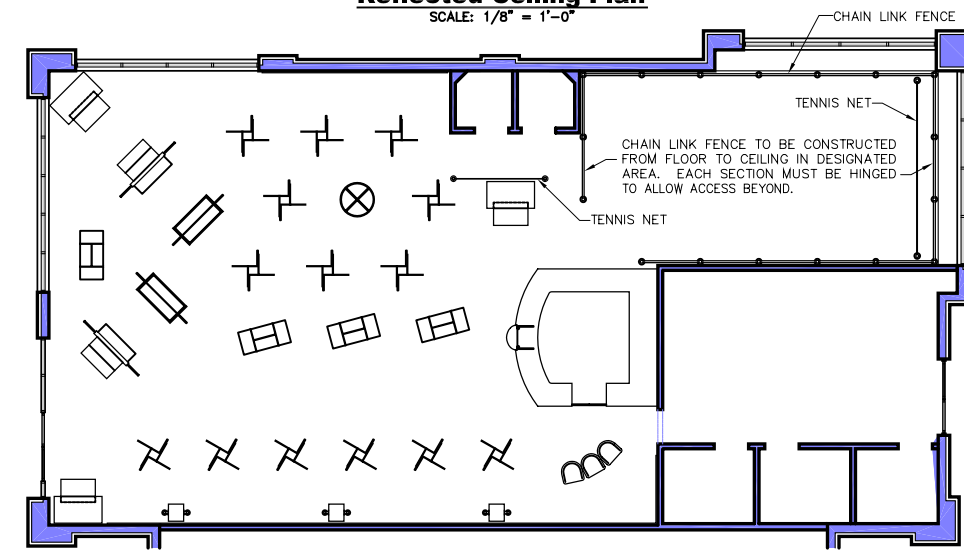


**FINISHES:**

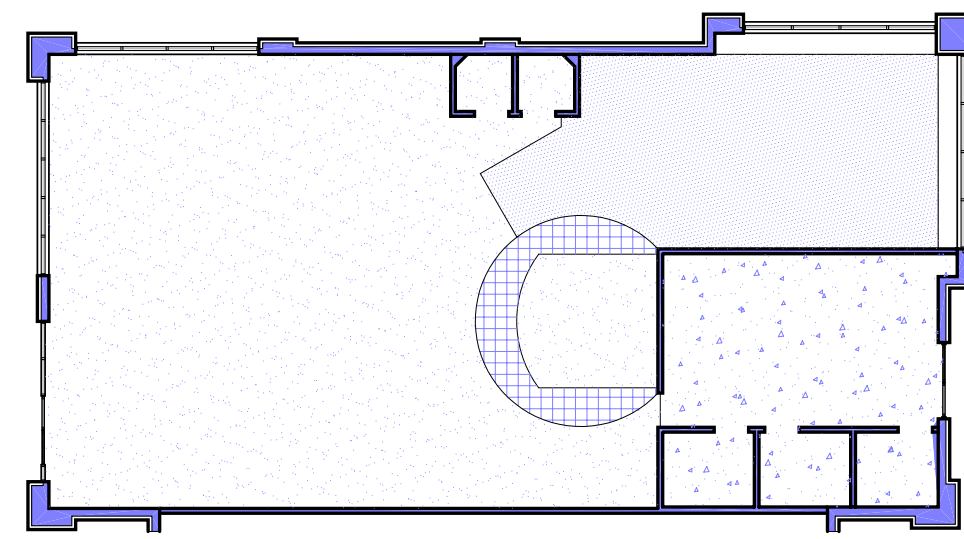
P1	SHERWIN WILLIAMS SW6386 'NAPERY'
P2	SHERWIN WILLIAMS SW0007 'DECOROUS AMBER'
P3	SHERWIN WILLIAMS SW6520 'HONEST BLUE'
P4	SHERWIN WILLIAMS SW6519 'HINTING BLUE'
S1	SLATWALL - NATURAL MDF FINISH
F1	ECO-SURFACES 614 'SIDNEY GREEN' or TEXTURED EPOXY
F2	ARMSTRONG VCT 51943 'CAYENNE RED'
F3	CARPET - T.B.D.
F4	COVE BASE - DK. GREY



- SUSPENDED FLUORESCENT MTD. @ 10'-0" A.F.F.
- CEILING MOUNTED FLUORESCENT MTD. TO CEILING (STOCK ROOM)
- 8' TRACK @ 10'-0" A.F.F.
- 4' TRACK @ 10'-0" A.F.F.
- 24" CEILING LAMP IN SUSPENDED FROM CEILING ELEMENT @ 9'-0" A.F.F.
- RECESSED CAN LIGHT MTD. IN SUSPENDED CEILING ELEMENT
- 2'x4' FLUORESCENT LIGHT MTD. @ 12'-0" A.F.F.
- CEILING LIGHT MTD. FLUSH @ 8'-0" A.F.F.
- SUSPENDED GLOBE LIGHT @ 8'-0" A.F.F.
- SUSPENDED PENDANT LAMP @ 8'-0" A.F.F.



- CUSTOM FLEX FIXTURE
- NESTED TABLES
- 4-WAY RACK
- LINEAR RACK
- 4-WAY SHELF UNIT
- CUBE/WALL UNIT
- CHAIR
- ROUNDER



- CARPET EXACT SPECIFICATION T.B.D. 1839.2 SQ. FT. 205 SQ. YARDS
- TILE - 12"x12" ARMSTRONG VCT 51943 CAYENNE RED 108.5 SQ. FT. 146 TILES
- RUBBER - ECOSURFACES 614 'SIDNEY GREEN' OR TEXTURED EPOXY - T.B.D. 573 SQ. FT. 64 SQ. YARDS
- CONCRETE

**DRAWINGS AND DIMENSIONS REPRESENT DESIGN INTENT ONLY. ALL EXISTING CONDITIONS MUST BE VERIFIED BY G.C. PRIOR TO ANY CONSTRUCTION. CLIENT (RACKETMAN) MUST BE NOTIFIED OF ANY DEVIATION FROM INTENDED PLAN OR DESIGN BEFORE CONSTRUCTION OF SUCH ELEMENT.**

**RACKETMAN**

**RACKETMAN**  
17708 EDISON AVE.  
CHESTERFIELD, MO

Drawn By: **NNGray**  
Date: **8/17/05**

**GRAY MATTER**

www.graymatter.biz 7 Sweetwater Ct. Ofallon, MO 64556 (314) 353-6555